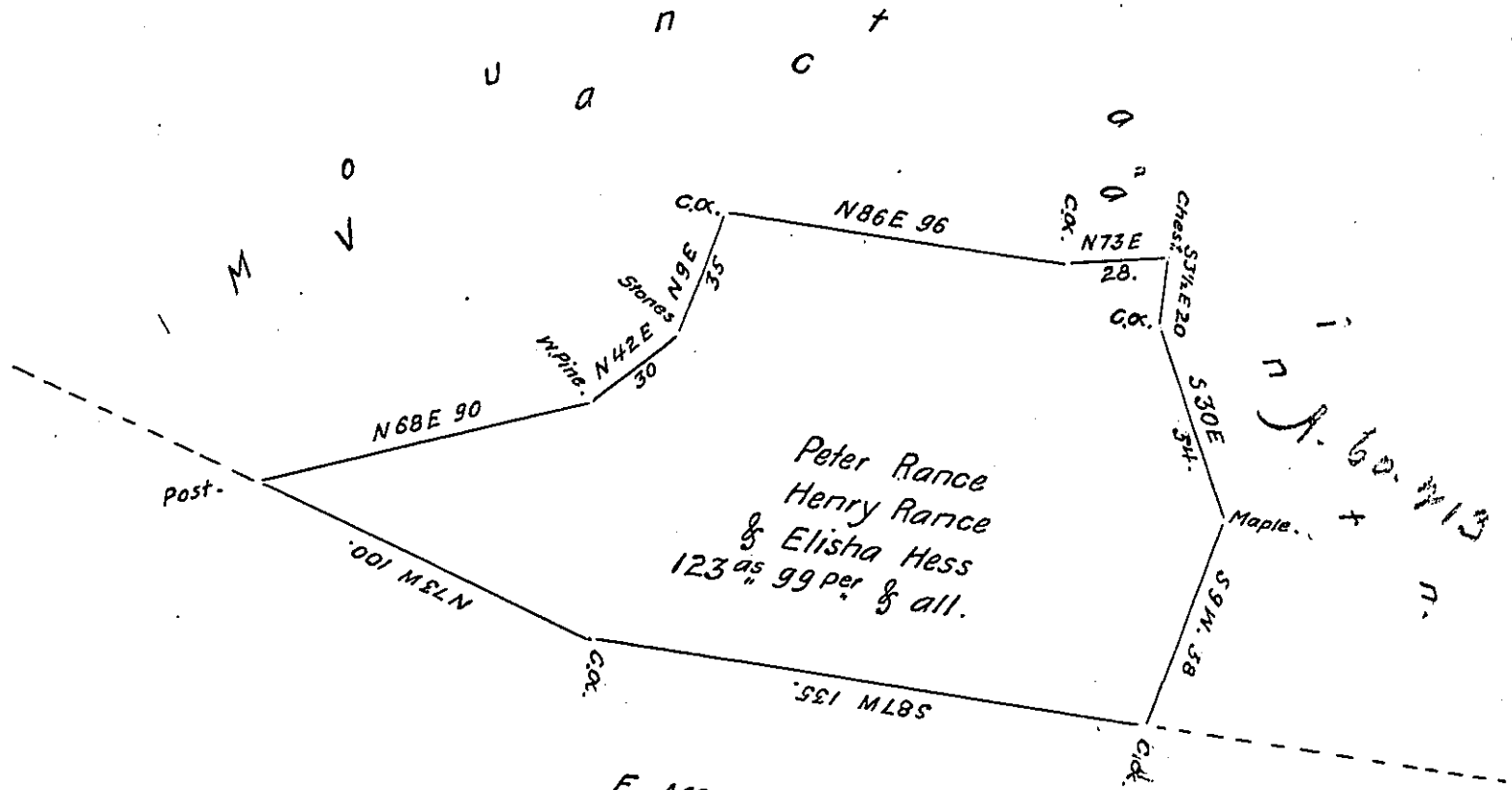


FORM No. 1.



E. McFarland
now George Webb.

C. 136. 470 - 281

A. 60. 713

Surveyed Nov. 11th 1846 to Peter Rance Henry Rance & Elisha Hess the above described tract of land by virtue of their warrant for 130^{ac} bearing date Oct. 23rd 1845 Situate in Clinton Township Lycoming County. Containing One hundred twenty three acres ninety nine perches & the usual allⁿ of Six per Cent for Roads &c.

To John Laporte Esq }
Surveyor General.

Francis Riddell D.S.

IN TESTIMONY that the above is a copy of the original remaining on file in the Department of Internal Affairs of Pennsylvania, made conformably to an Act of Assembly approved the 16th day of February 1833, I have hereunto set my hand and caused the Seal of said Department to be affixed at Harrisburg, this sixteenth day of January 1908

Henry Horvath

Secretary of Internal Affairs.